

2-PLY GOLD PANEL & LINK

SINGLE AND CONTINUOUS FILTERS - NO DIRT BY-PASS **MERV 7**

Don't settle for low efficiency throw-aways and low end pleats.



WHY 2-PLY GOLD PANELS

- ◆ UPGRADE FROM 1" FILTERS
- ◆ DUSTLOK BETWEEN MEDIA
- ◆ NO DAMAGE FROM MOISTURE
- ◆ 2 MEDIA LAYER CONSTRUCTION
- ◆ 100% FILTERING AREA
- ◆ NO DIRT BY-PASS
- ◆ SPOR-AX[®] ANTIMICROBIAL
- ◆ MERV 7

UPGRADE IN FILTRATION

The Fiber Bond 2-Ply Gold panel and continuous link filter are made tough. The perfect upgrade from throw-away and cheap pleated filters. No chipboard frame to collapse. Dustlok adhesive provides an internal barrier locking trapped dust in the filter.

NO UNFILTERED AIR DOWNSTREAM

The two layers of media extend past the perimeter grids of the 2-Ply Gold panel. These self-sealing edges lock the filter in place and eliminate any unfiltered air from going downstream through gaps around or between panels and links.

NO MOLD GROWTH ON FILTER

Spor-Ax antimicrobial is a biocide that effectively controls growth of mold, mildew, algae and fungi on the media. Mold growing in a filter media will increase resistance, reducing service life.

APPLICATIONS

Used in commercial and industrial air filtration systems. When clean air is important.

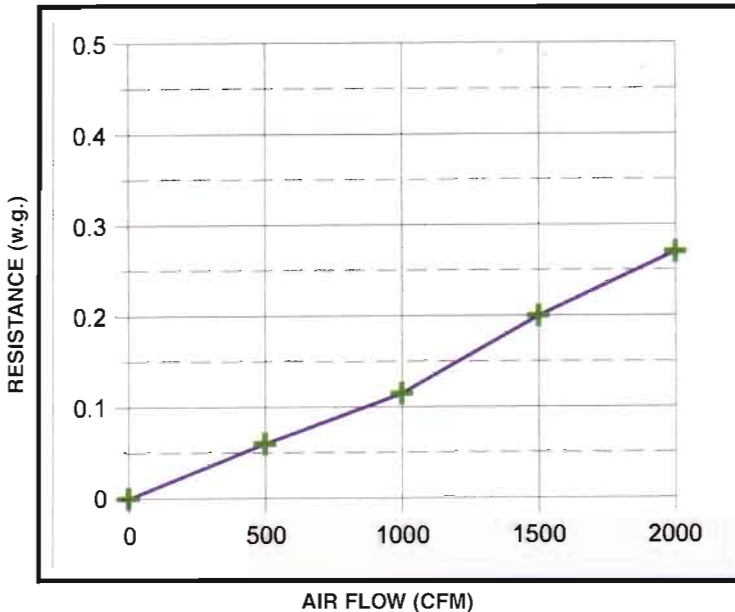
- ★ APARTMENTS
- ★ MALLS
- ★ BANKS
- ★ FAST FOOD
- ★ RESTAURANTS
- ★ FOOD PROCESSING
- ★ OFFICE BUILDINGS
- ★ SCHOOLS
- ★ HOTELS
- ★ MEDICAL BUILDINGS

**"THE BEST FILTERS
COME FROM THE BEST MEDIA"**

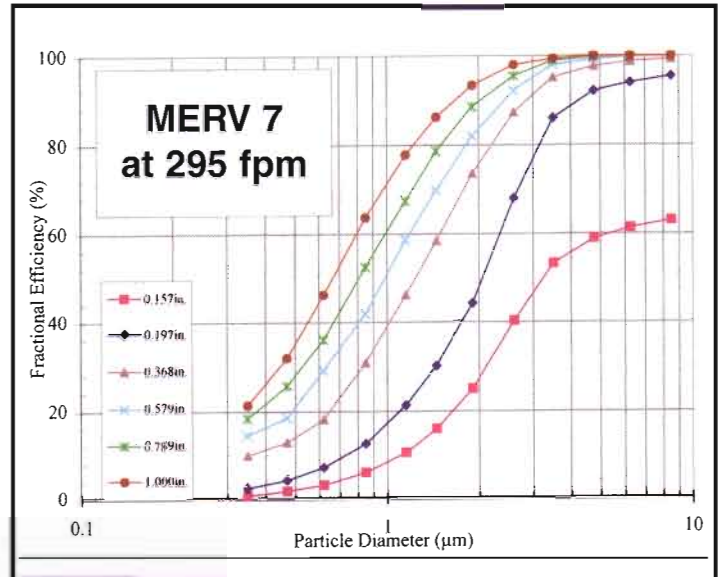
TECHNICAL DATA

- MERV 7 - ASHRAE 52.2-1999
- Operating temperature up to 200° F.
- Low initial resistance - 0.15" w.g. at 295 fpm.
- Recommended discard point 1.0" w.g.

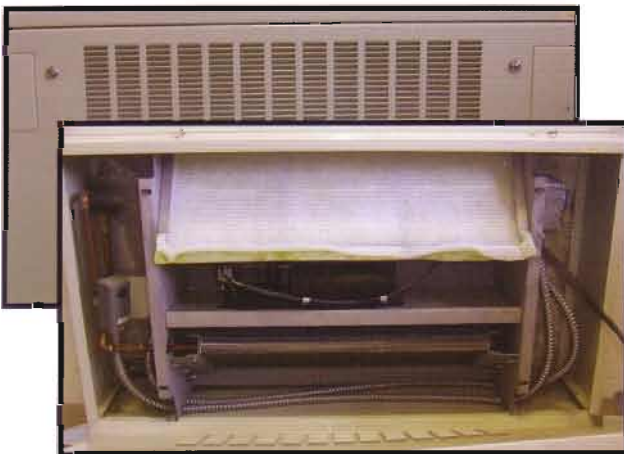
RESISTANCE VS AIRFLOW



REMOVAL EFFICIENCY VS PARTICLE SIZE



Particle Size Removal Efficiency Conducted by LMS Technologies. (APRIL 2007)



TYPICAL 2-PLY GOLD APPLICATION

DON'T SETTLE FOR LESS THAN THE BEST

- DUSTLOK® ADHESIVE
- SPOR-AX® ANTIMICROBIAL
- NO EARLY CHANGEOUT

Dustlok® and Spor-Ax® are registered trademarks of Fiber Bond Corporation.